



**NOVEMBER 2020**

# NEWSLETTER



## Enablement Care Christmas Party

Our Enablement Care Christmas Party\* for Residents and Staff will be held at 4pm on Monday the 21st of December!

We are looking forward to fun, games and Secret Santa gifts!

\*Conducted within COVID19 safety guidelines.

EAT \* DRINK  
AND BE MERRY

## Welcome to the Team!

All members of the CET team would like to welcome Jess and Sonja, our new Community Support Workers.

We are very happy to have you on board!



Jessica

## Quality Band 4!

In Nottinghamshire, we have a quality banding system for care homes. After a recent audit by Nottinghamshire County Council, we are pleased to announce that Enablement Care has been moved into quality band 4.

Many thanks to our staff for your professionalism and consistently high standards.

# The Great British Care Awards

## CONGRATULATIONS!

**Cody Eastwood**  
Has been shortlisted  
as a finalist for  
The GBCA East  
Midlands Awards

## CONGRATULATIONS!

**Zara Painter**  
Has been shortlisted as a  
finalist for  
The GBCA East Midlands  
Awards

## CONGRATULATIONS!

**Carla Simpson**  
Has been shortlisted as  
a finalist for  
The GBCA East  
Midlands Awards

## CONGRATULATIONS!

**Rachelle Baker**  
Has been shortlisted as  
a finalist for  
The GBCA East  
Midlands Awards

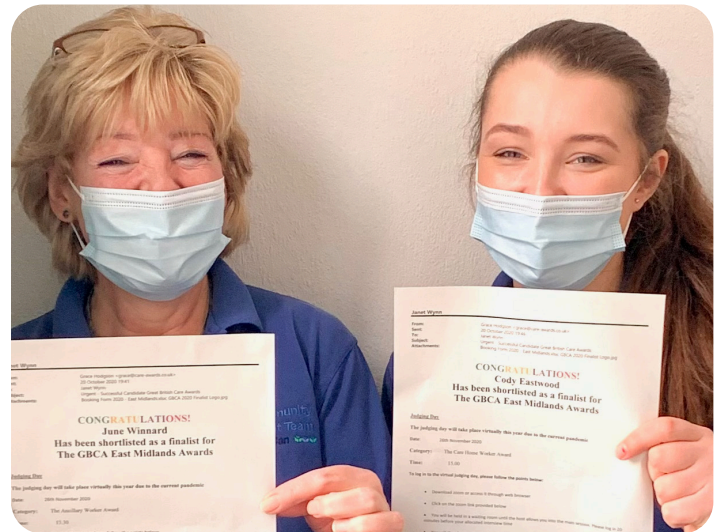
## CONGRATULATIONS!

**June Winnard**  
Has been shortlisted  
as a finalist for  
The GBCA East  
Midlands Awards

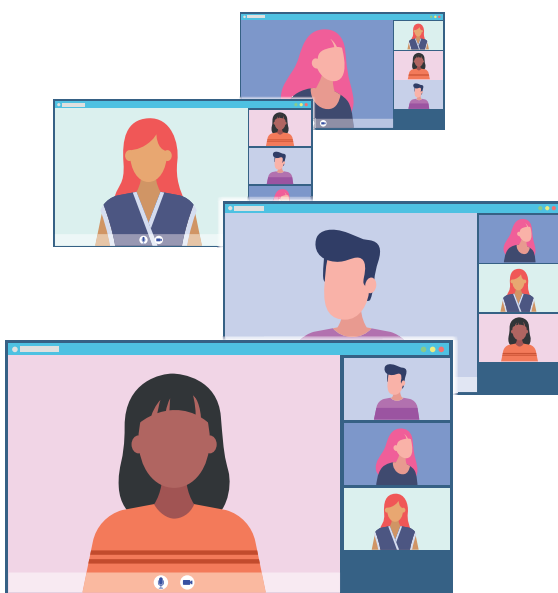
**“The Great British Care Awards are a series of regional events throughout the UK and are a celebration of excellence across the care sector. The purpose of the awards is to pay tribute to those individuals who have demonstrated outstanding excellence within their field of work.” - [www.care-awards.co.uk](http://www.care-awards.co.uk)**

All of our staff do a brilliant job. We are thrilled to have this recognised, some of our staff members (within Community Enablement Team and Enablement Care) have been shortlisted, as finalists in the GBCA East Midlands.

Massive congratulations to Zara, Carla, Rachelle, Cody and June! Good luck for the finals ladies, you are all amazing!



## Embracing Technology



The events of 2020 have been and continue to be testing for many of us. We have had to rethink the ways in which we stay in touch with one another.

Our Community Enablement Team Manager April has been embracing technology to overcome the restrictions of less face to face chats. She has been making brilliant use of video calls to keep in regular touch with our service users.



# Autumn Pupdate!!

 Guide Dogs | Sponsor  
a Puppy

Proud sponsor  
of Finn



“Due to COVID-19 there have been a few challenges to Finn’s training that we’ve had to overcome, but Finn has progressed nicely and continues to learn quickly. During lockdown we set up various obstacle courses for Finn in the garden, to try and replicate some of the situations he would normally encounter. We also used CD recordings of traffic, trains and other noises to help Finn continue to feel confident when he experiences these noises outside. Finn has taken these all in his stride.”

- Bob and June, Finn’s Puppy Walkers





# Activities at Enablement Care









## Have Something to Share?

We love to hear about the accomplishments and activities of our residents, service users and staff.

If you have something great that you'd like to share please get in touch by emailing [info@challengect.co.uk](mailto:info@challengect.co.uk) for consideration\*.

\*It may not be possible to include everything that we receive, but we will try our best.

## Training



Well done to our brilliant Community Enablement Team staff that, with the support of their manager, have all been working very hard on their training during this difficult period!

## Useful Websites

The National Health Service  
[www.nhs.uk](http://www.nhs.uk)

Government Services and Information  
[www.gov.uk](http://www.gov.uk)

Nottinghamshire County Council  
[www.nottinghamshire.gov.uk](http://www.nottinghamshire.gov.uk)

Derbyshire County Council  
[www.derbyshire.gov.uk](http://www.derbyshire.gov.uk)

The Samaritans  
[www.samaritans.org](http://www.samaritans.org)

Mind (Mental Health Charity)  
[www.mind.org.uk](http://www.mind.org.uk)



## Autumn Splash Time!

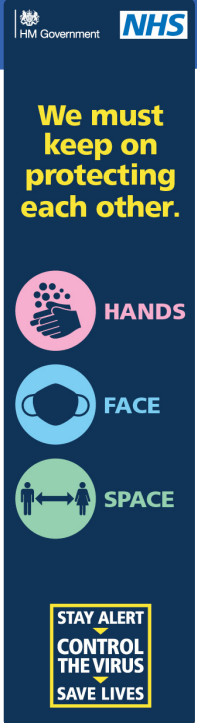


Lockdown fun for this lovely  
CET service user!



# National Lockdown in Brief

09.11.20



From the 5th of November to the 2nd of December England is in a **second national lockdown** (this time could be extended).

This means that you are not allowed to meet anyone indoors or outdoors in a private space (for example a friends garden).

You are allowed to meet one person from another household outside, in a public space, whilst social distancing.

The rules for support bubbles remain the same as they were for medium and high risk tier restrictions.

For more information about the COVID-19 restrictions please visit **[www.gov.uk/coronavirus](https://www.gov.uk/coronavirus)**

## New guidance to support safe care home visits during lockdown

09.11.20



We are aware that there is new guidance planned by the government that will encourage care homes to provide safe visiting opportunities.

This will involve the implementation of new measures. We are keen to keep our residents in contact with their friends and families and will keep you fully informed as we develop COVID-secure opportunities for visits, in accordance with the official government guidance, when we receive it.

Many thanks for your patience, Enablement Care, November 2020.

**Telephone** 01623 397750  
**Email** [enquiries@challengect.co.uk](mailto:enquiries@challengect.co.uk)

CCT Community Enablement Team Ltd  
Enablement Care  
Brook Street • Sutton in Ashfield  
Nottinghamshire • NG17 1ES

**[challengect.co.uk](http://challengect.co.uk)**



[www.facebook.com/cctcommunityenablementteam1](http://www.facebook.com/cctcommunityenablementteam1)



[www.facebook.com/enablementcaresuttoninashfield](http://www.facebook.com/enablementcaresuttoninashfield)



[www.facebook.com/ChallengeConsultancyandTraining](http://www.facebook.com/ChallengeConsultancyandTraining)



Search for CCT Community Enablement Team



@Enablement\_Care



@enablementcaresia